

STAR

TECHNOLOGY



STARGRES®

HOME & PUBLIC
BUILDING

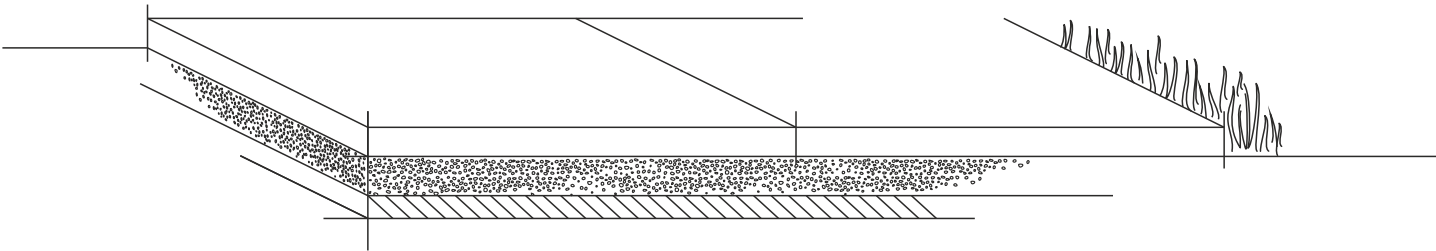
PAVING SYSTEMS _____

2.0

WHY CHOOSE STAR 2.0?	4
APPLICATIONS	7
METHODS OF ASSEMBLY	8

3.0

INNOVATION IN THE FIELD OF GRES	11
WHY CHOOSE STAR 3.0	12
METHODS OF ASSEMBLY	18
APPLICATIONS	22
STAR 3.0 COLLECTIONS	27
STAR 2.0 COLLECTIONS	37
TECHNICAL PARAMETERS	72
PACKAGING	72
THE INTENDED USE OF THE PRODUCT	72



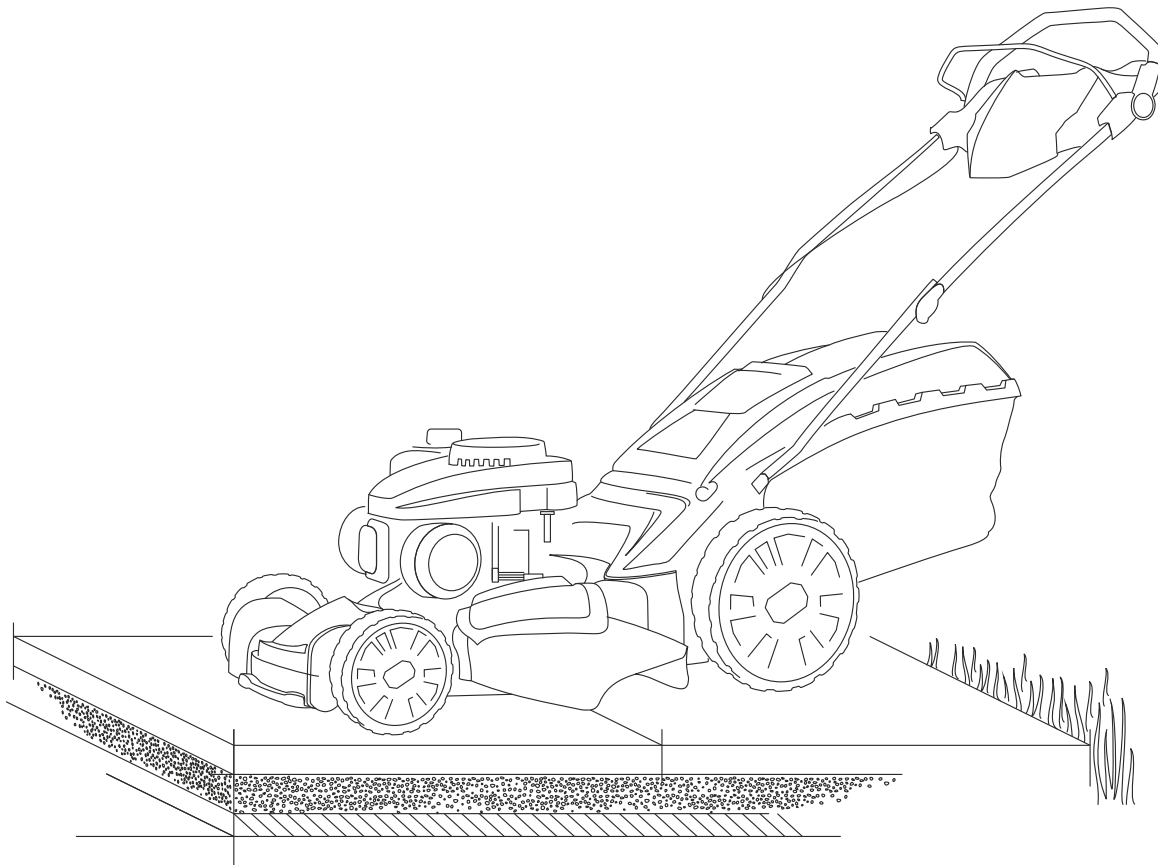


HOME & PUBLIC BUILDING **PAVING** SYSTEMS

**STAR
2.0**

STARGRES slabs coming in a thickness of 2 cm belong to the STAR 2.0 system and are designed to be used wherever it is necessary to obtain surfaces with the highest strength standards. They are resistant to changing climatic conditions, strong sunlight, resistant to mold and moss. They have anti-slip properties, are frost-resistant and non-flammable.

The combination of excellent parameters and modern design makes the STAR 2.0 systems suitable for various locations. They are ideal for use on balconies, terraces, driveways, patios, in alleys, gardens, on grass, sand and near swimming pools. The ease of installation makes them an ideal solution for the development of both private and public spaces.



OUTDOOR SYSTEMS

WHY CHOOSE STAR 2.0?

It is a perfect solution with exceptional aesthetics and usability at a good price for public and private spaces. The STAR 2.0 Porcelain Gres is a wide range of formats, structures, surfaces, colors, finishes and laying methods.

Simplicity of use, the possibility of quick replacement or removal, resistance to destructive loads, variable climatic conditions, i.e. temperature fluctuations, strong exposure to sunlight and resistance to moss, mold and chemicals are just some of the advantages for which it is worth to opt for STAR 2.0. STAR 2.0 panels are frost-resistant, non-flammable, non-absorbent and do not succumb to the passage of time.

Above all, it is an excellent choice for the surroundings of your house.



FROST RESISTANCE



RESISTANCE TO CHANGING
TEMPERATURES
AND ATMOSPHERIC CONDITIONS



RESISTANCE TO MOSS,
MOLD AND STAINS



RESISTANCE TO LOAD



DRY AND WET
CLEANING EASINESS



RESISTANCE TO STAINS
AND CHEMICALS



RESISTANCE TO SCRATCHING



RESISTANCE TO SLIPPING



EASE OF ASSEMBLY
AND DISASSEMBLY

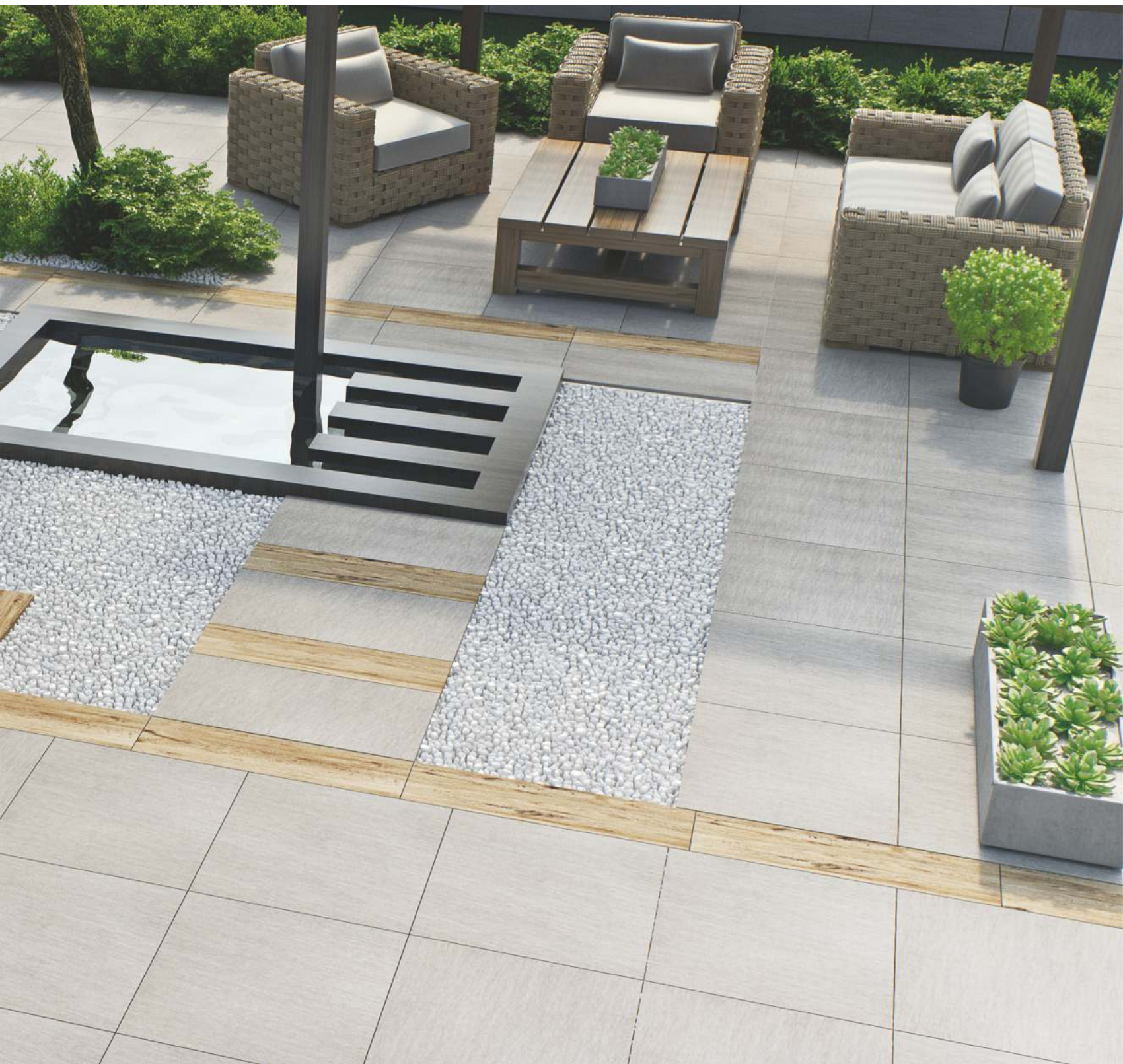


STAR
2.0



The STAR 2.0 terrace slab collections are designed for outdoor use, in public and private areas. These are ideal solutions for patios, terraces, gardens or swimming pool edges.

OUTDOOR
SYSTEMS



STAR 2.0 APPLICATIONS

- 

PAVEMENTS
- 

RAISED FLOOR
- 

SWIMMING POOLS
- 

BEACHES
- 

GARDENS
- 

TERRACES, PATIOS, BALCONIES
- 

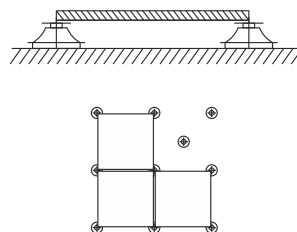
STRENGTH
min 700 kg/60x60cm

METHODS OF ASSEMBLY

The combination of excellent parameters and modern design makes the STAR 2.0 systems suitable for various locations. They are ideal for use on balconies, terraces, driveways, patios, in alleys, gardens, on grass, sand and near swimming pools. The ease of installation makes them an ideal solution for the development of both private and public spaces.

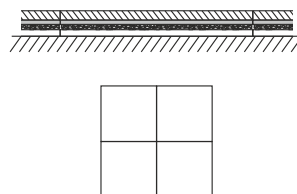
DRY INSTALLATION ON BRACKETS

- ease of assembly and disassembly,
- simple levelling of floors / terraces
- high load-bearing capacity,
- reduction of the weight of the floor structure,
- quick and inexpensive assembly,
- possibility of installation under the floor,
- natural drainage,
- innovative and ergonomic system.



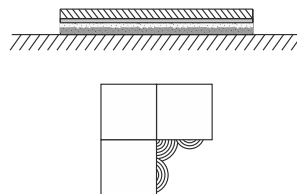
DRY INSTALLATION

- ease of laying, repositioning and removal of slabs,
- possibility of laying without adhesive mortar,
- express assembly and disassembly,
- mobility,



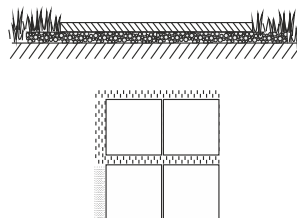
INSTALLATION ON A SUBSTRUCTURE WITH ADHESIVE

- perfect solution for driveways and parking entrances,
- for people who value tradition,
- increased resistance against traffic intensity due to the gaps (joints) being filled with cement mortars.



INSTALLATION ON GRASSY GROUND, GRAVEL OR SAND

- excellent solution for arranging: gazebos, pavements, barbecue spots, alleys in the garden and outdoors,
- easy laying, repositioning and removal of slabs, no need for adhesive mortar,
- versatile and mobile use.



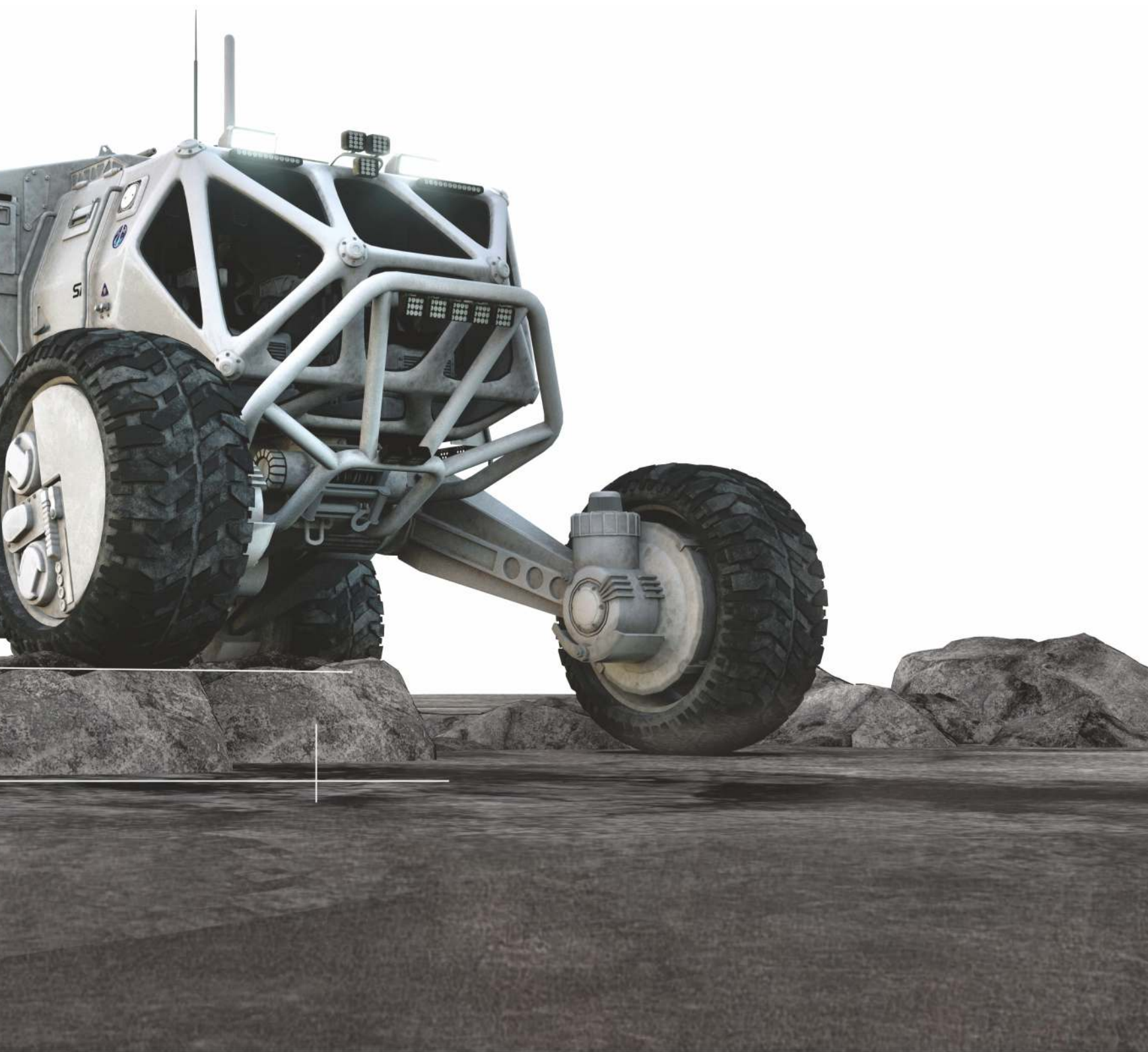
PAVING SYSTEMS



PAVEMENTS
SWIMMING POOLS
BEACHES
GARDENS
PLAZAS
PATIOS/BALCONIES
DRIVEWAYS
INDUSTRIAL AREAS



EXTRAORDINARY **PAVING** SYSTEMS



STAR 3.0 – INNOVATION IN THE FIELD OF GRES

Gres Star 3.0 is a combination of the nobility of natural stone, the modernity of concrete and the practicality and versatility of gres tiles. Thanks to it you can enjoy the beauty of garden architecture made of natural stones, at the same time enjoying the resistance of gres and easy maintenance.

STAR 3.0

WHY 3 CM?

The innovative thickness of the STAR 3.0 series slabs amounting to 3 cm guarantees a number of advantages.

First of all, 50% higher weight means **50% more stability!**



RESISTANCE TO STAINS

The surface of gres slabs is resistant to mold, moss and chemicals.



DURABILITY AND STRENGTH

Breaking force higher than for 2 cm tiles.

The 3 cm thick terrace tiles can also be used on driveways and high traffic areas.



WE ARE INSPIRED BY NATURE

Nature's creations were our inspiration when creating patterns for our terrace slabs collections. The uniqueness of natural stones, the warmth of wood and the austerity of concrete are the keystones of the Star 3.0 series. All of our products reproduce the characteristic features of natural stones and wood, so that they perfectly harmonize with these elements.

THE STAR 3.0 SERIES IS SUPERIOR TO NATURAL STONE AND CONCRETE SLABS THANKS TO:



GREATER STRENGTH

Thanks to its glazed surface, gres has a high strength and low abrasion resistance.

RESISTANCE TO STAINING AND EASY CLEANING

To remove current dirt, simply use water and a brush. Impregnation is not necessary. Even grease or wine stains are not a problem when cleaning the slabs!

R11



R11 RESISTANCE TO SLIPPING

Excellent slipping resistance properties that guarantee safety for all users.



RESISTANCE TO ATMOSPHERIC CONDITIONS

Excellent resistance to atmospheric conditions, including frost or solar radiation.



SIMPLY **NATURAL**
EXTREMELY **DURABLE**



STAR
3.0



HOME & PUBLIC
BUILDING
PAVING SYSTEMS

QUALITY OF WORKMANSHIP

A single slab is 3 cm thick, homogeneous, there is no risk of delamination as in the case of other products.

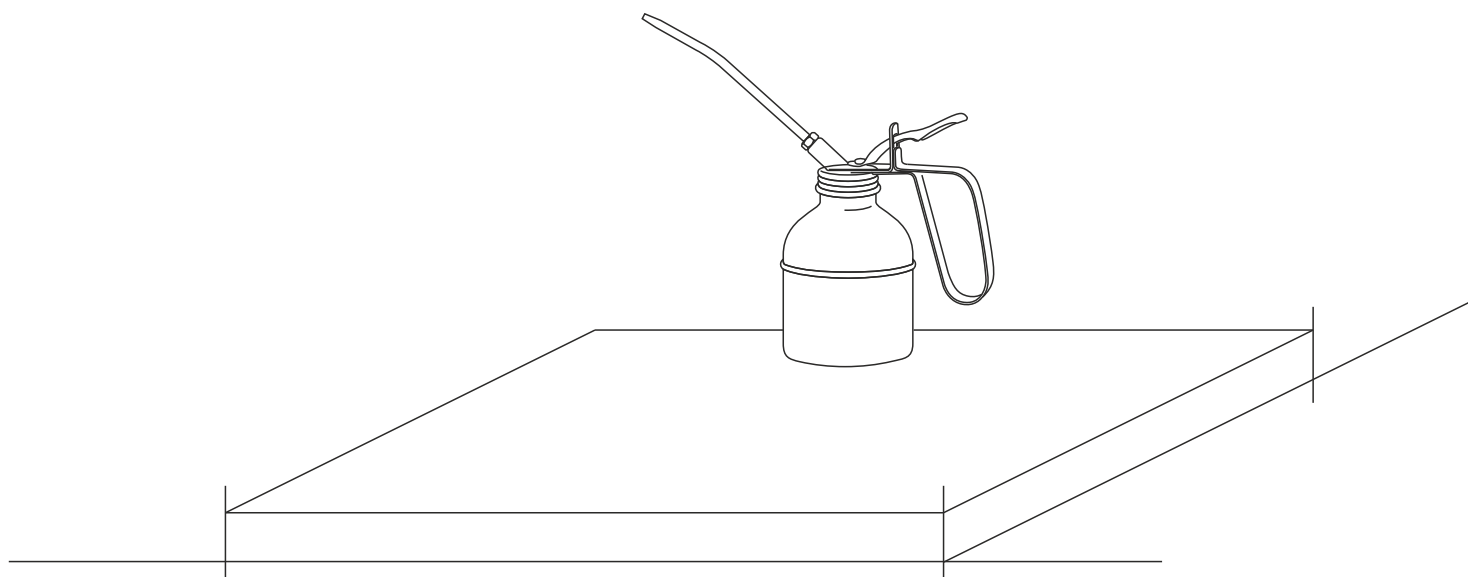
RECTIFIED EDGES

The rectification of STAR 3.0 series slabs guarantees uniform joints. In addition, each of the edges is chamfered, which further enhances the visual qualities of the product.

RESISTANCE TO STAINS

Resistance to chemicals such as engine oils and other operating fluids of vehicles plus easy cleaning of the resulting stains makes gres slabs an ideal solution for garages, driveways or car showrooms.

GARAGES
DRIVEWAYS,
WORKSHOPS
AND
CAR SHOWROOMS,
CAR PARKS



Cafe Racer

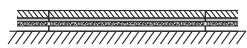
「
DOWNTOWN
」



HOME & PUBLIC BUILDING **PAVING** SYSTEMS

EASY AND QUICK ASSEMBLY

Gres Star 3.0 can be successfully laid on a hardened substrate without the use of adhesive, on brackets or classically with a standard glue mortar for gres.



LAYING ON GRAVEL OR SAND

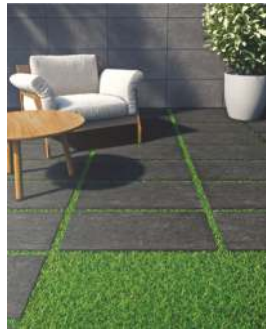
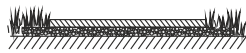
GRAVEL (GROUND)

- **STAR 2.0, 3.0** gres slab
- Fine gravel layer
- Stabilizing layer
- Drainage layer
- Ground

GRAVEL (CEILING)

LAYING ON FLAT OVERLAYS

- **STAR 2.0, 3.0** gres slab
- Ballast (gravel)
- Insulating layer
- Separating layer
- Thermal insulation element
- Impermeable coating
- Sloping substructure
- Ceiling



LAYING ON A GRASS SUBSTRATE

GRASS (GROUND)

- **STAR 2.0, 3.0** gres slab
- Soil layer with grassy substrate
- Fine gravel layer
- Stabilizing layer
- Drainage layer
- Ground



LIFTED STACKING ON FLAT OVERLAYS

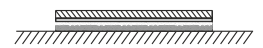
RAISED FLOOR (CEILING) ON FLAT OVERLAYS

- **STAR 2.0** gres slab
- Distance bracket (fixed, adjustable or self-levelling)
- Separating layer
- Thermal insulation element
- Impermeable coating
- Sloping substructure
- Overlay ceiling

Is recommended to install the tiles on 5 brackets:
4 extremely 1 in the middle.

WARNING

When installing 2 cm ceramic boards as a terrace system with an elevated bracket, the board may crack. Therefore, the manufacturer recommends to check the specific application before installation. Under certain conditions, the 2 cm board should be reinforced with a layer of fiber mesh or galvanized sheet metal. Failure to follow these instructions may lead to misuse of the product or cause serious damage or injury.



LAYING ON A SUBSTRUCTURE WITH THE USE OF ADHESIVE

SUBSTRUCTURE (GROUND)

- **STAR 2.0, 3.0** gres slab
- Substructure
- Levelling layer
- Layer of gravel stabilized with lean concrete
- Ground

SUBSTRUCTURE (CEILING) LAYING ON FLAT OVERLAYS

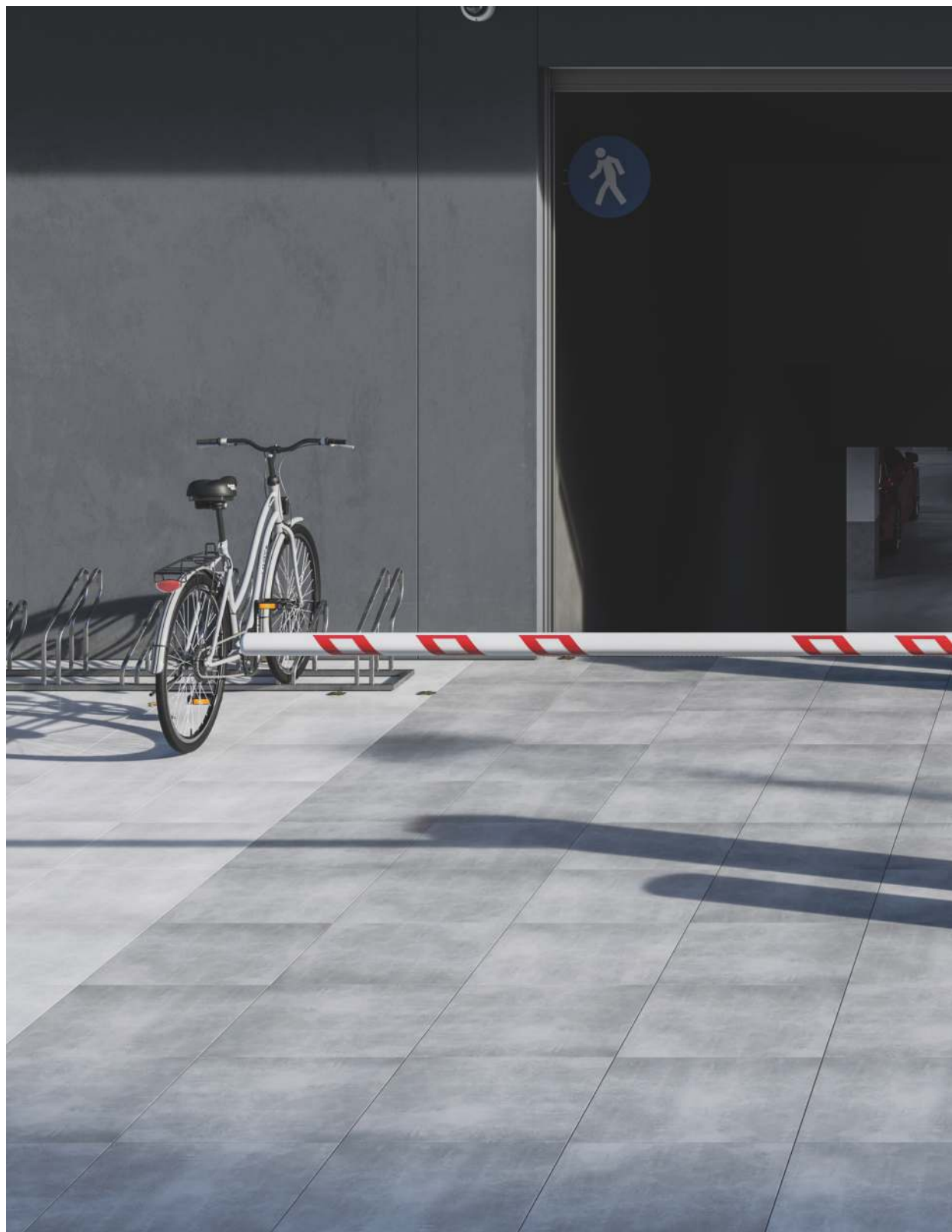
- **STAR 2.0, 3.0** gres slab
- Cement layer
- Separating layer
- Thermal insulation element
- Impermeable coating
- Sloping substructure
- Ceiling

STAR
3.0



STAR
3.0

PAVEMENTS
SWIMMING POOLS
BEACHES
GARDENS
PLAZAS
PATIOS/BALCONIES
DRIVEWAYS
INDUSTRIAL AREAS



EXTRAORDINARY **PAVING** SYSTEMS



SAVINGS IN COSTS OF ASSEMBLY

Non-standard thickness of 3 cm means 50% more weight of the slab compared to a standard 2 cm thick slab. The increased weight ensures the stability of the slab laid without the use of adhesive, directly on the prepared, hardened substrate, and prevents it from shifting. This is a significant convenience! It saves time and reduces assembly costs because it is much less complicated and does not require the use of adhesive mortars, special tools, accessories and in some cases also a qualified assembly team.

STAR 3.0

STAR 3.0
APPLICATION _____



PAVEMENTS



RAISED FLOOR



SWIMMING POOLS



BEACHES



GARDENS



TERRACES, PATIOS,
BALCONIES



PUBLIC
SPACES, PLAZAS



DRIVEWAYS



VEHICLE PATHS



INDUSTRIAL SPACES



STRENGTH
min 3,000 kg/60x60cm



VEHICLE PATHS
UP TO 3.5 TONNES

STAR
3.0

DURABLE,
STRONG,
FROST RESISTANT,
EASY TO ASSEMBLY,
EASY TO CLEAN,
SLIP RESISTANT,
ECOLOGICAL,
ECONOMICAL.



EXTRAORDINARY
PAVING SYSTEMS



INCREDIBLE STRENGTH

Thanks to their high crack resistance of over 3000 kg of pressure, the STAR 3.0 terrace slabs are the ideal solution for laying driveways and all kinds of surfaces on which motor vehicles weighing up to 3.5 tonnes can be driven.

The rectified edges of gres slabs enable the use of a minimum joint width. With a slab thickness of 30 mm, this allows for a sufficiently deep tuckpointing, which guarantees a longer service life of the surface and better visual effects.





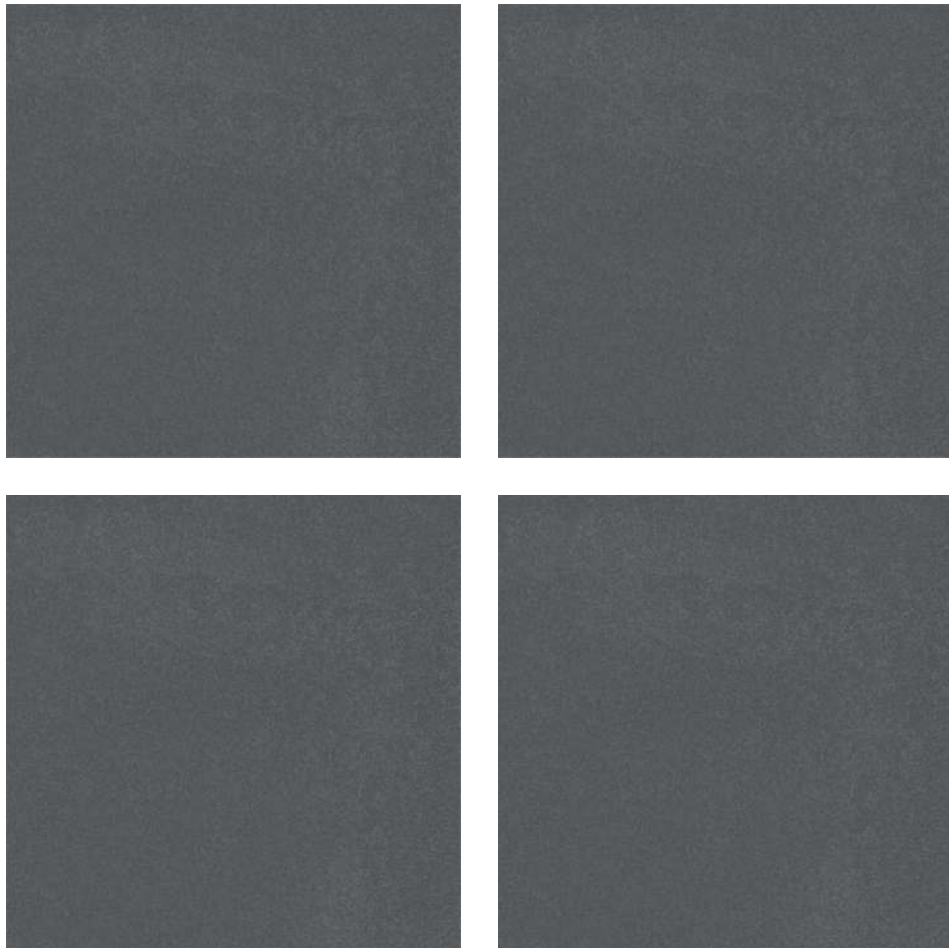
STAR 3.0

BASALTINA	29
SPECTRE	31
TOWN	33
STARK	35



BASALTINA 3.0

RECTIFIED



BASALTINA 60x60x3



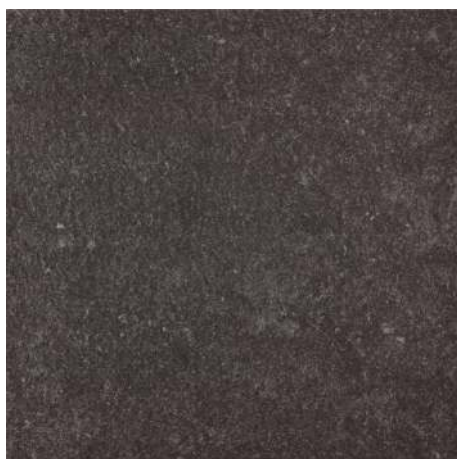


SPECTRE 3.0

RECTIFIED



SPECTRE GREY 60x60x3



SPECTRE DARK GREY 60x60x3





TOWN 3.0

RECTIFIED



TOWN SOFT GREY 60x60x3



TOWN GREY 60x60x3



TOWN BEIGE 60x60x3



TOWN ANTRACITE 60x60x3





STARK 3.0

RECTIFIED



STARK WHITE 60x60x3



STARK PURE GREY 60x60x3



STARK GRAPHITE 60x60x3







STAR 2.0

DANZIG	40
DOWNTOWN	43
BRESLAU	47
STARK	49
SPECTRE	51
GRANITO	53
PIETRA SERENA	55
CRACOVIA	57
BASALTINA	59
TOWN	62
GREY WIND	65
KYARA	67
MIXED STONE	69
SUOMI	71

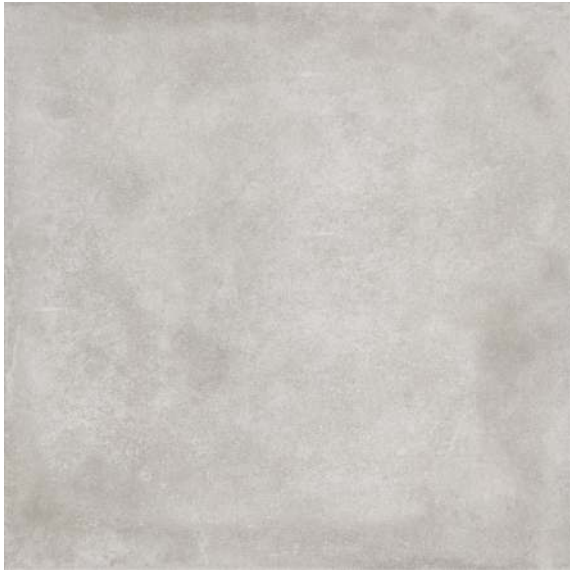
「 DANZIG 2.0 」
RECTIFIED



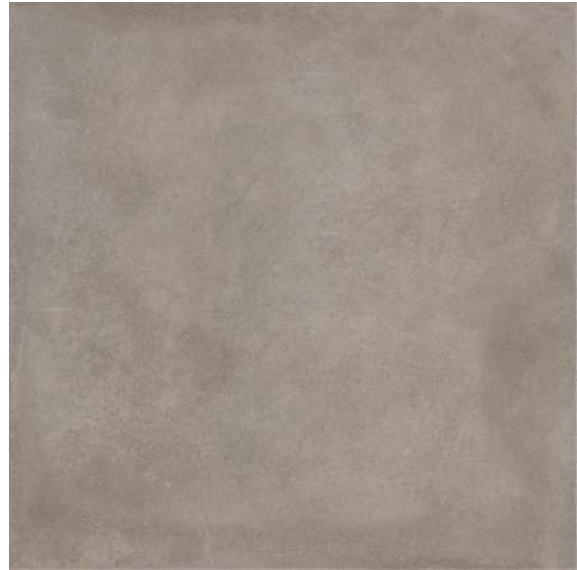


DANZIG 2.0

RECTIFIED



DANZIG WHITE 75x75x2



DANZIG TAUPE 75x75x2



DANZIG GREY 75x75x2

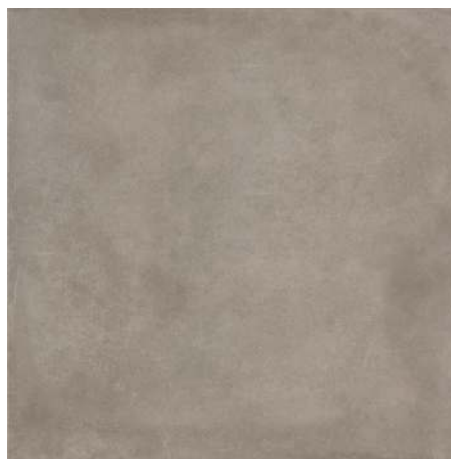


DANZIG 2.0

RECTIFIED



DANZIG WHITE 60x60x2



DANZIG TAUPE 60x60x2



DANZIG GREY 60x60x2



DANZIG NATURAL 60x60x2



DANZIG ANTRACITE 60x60x2





「DOWNTOWN 2.0」

RECTIFIED



DOWNTOWN GREY 60x60x2



DOWNTOWN TAUPE 60x60x2



DOWNTOWN ANTRACITE 60x60x2



Cafe Racer



「DOWNTOWN 2.0」

RECTIFIED



DOWNTOWN GREY 75x75x2



DOWNTOWN TAUPE 75x75x2



DOWNTOWN ANTRACITE 75x75x2





BRESLAU 2.0

RECITIFIED



BRESLAU LIGHT 60x60x2



BRESLAU DARK 60x60x2





STARK 2.0

RECTIFIED



STARK WHITE 60x60x2



STARK PURE GREY 60x60x2



STARK GRAPHITE 60x60x2





SPECTRE 2.0

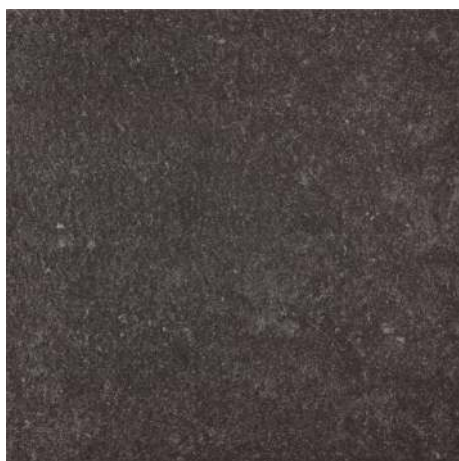
RECTIFIED



SPECTRE GREY 60x60x2



SPECTRE GREY 40x81x2



SPECTRE DARK GREY 60x60x2



SPECTRE DARK GREY 40x81x2





GRANITO **2.0**
RECTIFIED



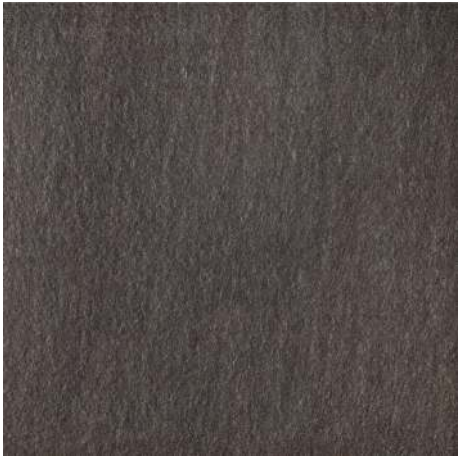
GRANITO GRIGIO 60x60x2



GRANITO GRIGIO 40x81x2

GRANITO BEIGE 60x60x2

GRANITO BEIGE 40x81x2



GRANITO ANTRACITE 60x60x2



GRANITO ANTRACITE 40x81x2





PIETRA SERENA 2.0

RECTIFIED



PIETRA SERENA CREAM 60x60x2



PIETRA SERENA GREY 60x60x2



PIETRA SERENA ANTRACITE 60x60x2



PIETRA SERENA BLACK 60x60x2





CRACOVIA 2.0

RECTIFIED



CRACOVIA WHITE 60x60x2



CRACOVIA WHITE 40x81x2



CRACOVIA GREY 60x60x2



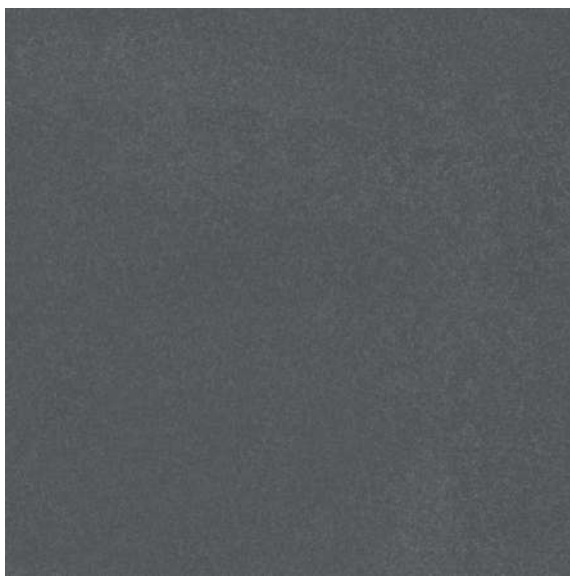
CRACOVIA GREY 40x81x2



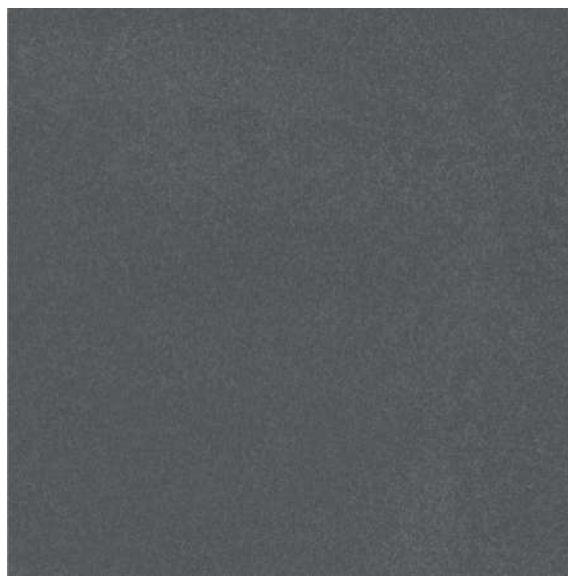


BASALTINA 2.0

RECTIFIED



BASALTINA 75x75x2



BASALTINA 40x81x2



BASALTINA 60x60x2



「 TOWN 2.0 」
RECTIFIED





TOWN 2.0

RECTIFIED



TOWN SOFT GREY 75x75x2



TOWN GREY 75x75x2



TOWN BEIGE 75x75x2

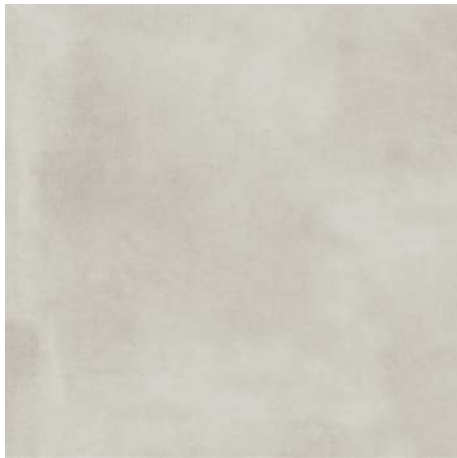


TOWN ANTRACITE 75x75x2

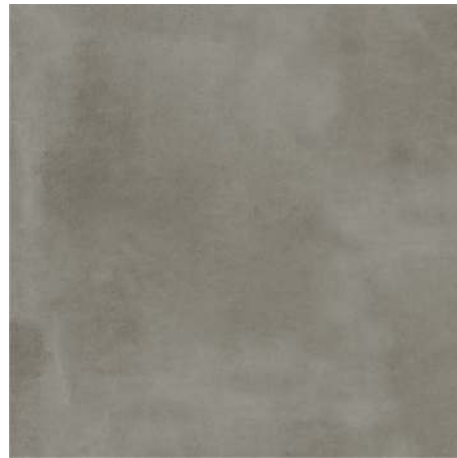


TOWN 2.0

RECTIFIED



TOWN SOFT GREY 60x60x2



TOWN GREY 60x60x2



TOWN BEIGE 60x60x2



TOWN ANTRACITE 60x60x2





GREY WIND 2.0

RECTIFIED



GREY WIND LIGHT 60x60x2



GREY WIND MILD 60x60x2



GREY WIND DARK 60x60x2



GREY WIND ANTRACITE 60x60x2





KYARA 2.0

RECTIFIED



KYARA LIGHT 60x60x2



KYARA DARK 60x60x2





MIXED STONE 2.0

RECTIFIED



MIXED STONE SOFT GREY 60x60x2



MIXED STONE GREY 60x60x2





SUOMI 2.0

RECTIFIED



SUOMI WHITE 60x60x2



SUOMI WHITE 40x81x2



SUOMI CREAM 60x60x2



SUOMI CREAM 40x81x2



SUOMI BROWN 60x60x2



SUOMI BROWN 40x81x2



TECHNICAL PARAMETERS

PROPERTIES	TEST ACCORDING TO		PARAMETERS
WATER ABSORPTION (%)	ISO 10545-3		EB ≤ 0,5
BENDING RESISTANCE (N/MM2)	ISO 10545-4		MIN. 35
BREAKING FORCE*(N)	ISO 10545-4	STAR 2.0	MIN. 7000
		STAR 3.0	MIN. 30 000
PEI ABRASION CLASS	ISO 10545-7		4
RESISTANCE TO HAIRLINE CRACKS	ISO 10545-11V		RESISTANT
FROST RESISTANCE	ISO 10545-12		RESISTANT
CHEMICAL RESISTANCE REAGENTS	ISO 10545-13	AMMONIUM CHLORIDE	GA
		SODIUM HYPOCHLORITE	GA
		HYDROCHLORIC ACID L	GLA
		CITRIC ACID	GLA
		POTASSIUM HYDROXIDE L	GLA
RESISTANCE TO STAINS	ISO 10545-14		CLASS 5
CLASSIFICATION GROUP OF SLIP RESISTANCE PERFORMANCE	DIN 51130		R9 / R12

* on the surface of a 60x60cm slab

PACKAGING

FORMAT cm / in	THICKNESS mm / in	PCS / BOX	M2 BOX / Sq.Ft. BOX	KG BOX / LB BOX	BOX / PALLET	KG PALLET / LB PALLET	M2 PALLET / Sq.Ft. PALLET
40x81 cm / 16x32* in	20 / 0,78	2	0,65 / 6,99	24 / 52,91	24	695 / 1532	15,60 / 167,91
60x60 cm / 24x24* in	20 / 0,78	2	0,72 / 7,75	31 / 68,34	30	980 / 2160	21,60 / 232,50
75x75 cm / 30x30* in	20 / 0,78	1	0,56 / 6,02	24,16 / 53,26	48	1184 / 2610	26,88 / 289,33
60x60 cm / 24x24* in	30 / 1,18	1	0,36 / 3,87	25 / 55,11	40	1050 / 2314	14,4 / 155,00

* nominal value

PRODUCT DESTINATION



TO BE LAID
ON THE FLOOR



FROST
RESISTANCE



RECTIFIED



THICKNESS
2cm/3cm



BAREFOOT
CERTIFICATE



RESISTANCE
TO SLIPPING




ABRASIVENESS
CLASS



SCALE
OF SHADES


CERTIFICATES



**Instytut Ceramiki
i Materiałów
Budowlanych**

KOMISJA AKREDYTACJI
LABORATORIUM NR 107

02-676 Warszawa, ul. Postępu 9



PCA
Polskie Centrum
Akredytacji

AB 115

**LABORATORIUM BADAWCZE CERAMIKI
I MATERIAŁÓW BUDOWLANYCH**

**AKREDYTOWANE PRZEZ
POLSKIE CENTRUM AKREDYTACJI**

NR CERTYFIKATU AB 115

Łość stron 11

Numer egz. 1

SPRAWOZDANIE Z BADAŃ NR 32/LB/2016

NAZWA WYROBU: PŁYTKI CERAMICZNE


ZLECENIODAWCA: STARGRES SP. Z O.O.
UL. CERAMICZNA 5
26-200 KOŃSKIE

DATA OTRZYMANIA PRÓBEK: 13.10.2015r

DATA WYKONANIA BADANIA: 10.12.2015r.–18.02.2016r.

WYKONAWCA: mgr Agnieszka Ducka
technik Jacek Kaminski
mgr Robert Sytek

Warszawa, dnia 23.02.2016r.




INSTYTUT CERAMIKI I MATERIAŁÓW BUDOWLANYCH
DROGA KRAKOWSKA 141, 01-147

**Instytut Ceramiki
i Materiałów
Budowlanych**

07-676 Warszawa, ul. Postępu 9

LABORATORIUM BADAWCZE
CERAMIKI I MATERIAŁÓW BUDOWLANYCH
AKREDYTOWANE PRZEZ
POLSKIE CENTRUM AKREDYTACJI
NR CERTYFIKATU AB 115



PCA
Polskie Centrum Akredytacji
AB 115

Zakres obszarów
badawczych

- elementów stropów ceramicznych
- elementów murów i fundamentów
- płytek i płyt ceramicznych
- reaktorów nuklearnych
- elementów izolacyjnych i ceramicznych
- reaktorów nuklearnych

Łość stron 10

Numer egz. I

SPRAWOZDANIE Z BADAŃ NR 45/LB/2015

NAZWA WYROBU: Płytki ceramiczne prasowane na sucho o małej nasiąkliwości wodnej $E_s \leq 0,5\%$. Grupa B1a.

ZLECIENIODAWCA: STARGRES Sp. z o.o.
UL. CERAMICZNA 5
26-200 KOŃSKIE

DATA OTRZYMANIA PRÓBEK: 14.01.2015r.

DATA WYKONANIA BADANIA: 19.01.2015. – 20.03.2015r.

WYKONAWCA: mgr Agnieszka Dryńska
mgr Agnieszka Duda
technik Jacek Kamiński
mgr inż. Joanna Lewicka

Warszawa, dnia 26.03.2015r.

No part of the catalogue may be reproduced in any form or by any digital means, including information retrieval and storage systems, without the express written consent of the Distributor. Changes or modifications to the technical data of the products as well as changes in the catalogue are prohibited. The colors of the products may differ from those shown in the photographs due to limitations in the printing process.



STARGRES®

Stargres Sp. z o.o.
26-200 Końskie
ul. Ceramiczna 5
Poland

www.stargres.pl